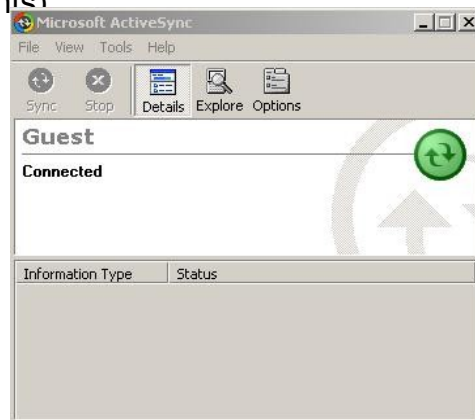
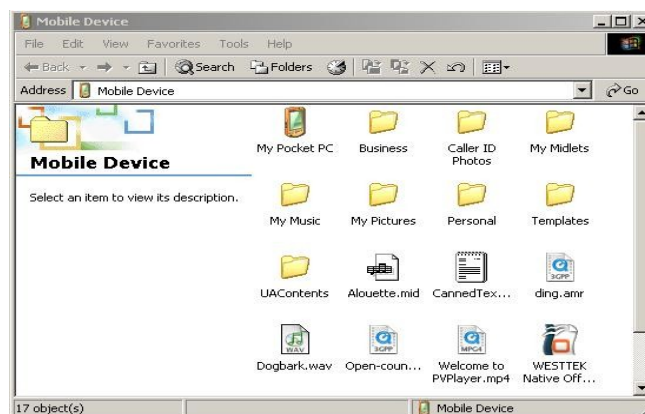


INSTALLING CCTV ANYWHERE

1. On your Desktop PC, run ActiveSync and click the Explore button (this should default to My Documents)



2. Copy installation file 'VVS CLT Viewer.CAB' to the My Documents folder of your Pocket PC.



3. On your Pocket PC, run File Explorer (from Programs Menu) and click the installation program 'VVS CLT Viewer' (in My Documents). This should install the program 'CCTV anywhere' and add a shortcut to the Programs Menu.
4. On first run, you will be asked to enter your VIPLink Account Username and Password. You should accept the other defaults asked for until you are more familiar with the operation of CCTV anywhere on Pocket PC.
5. To begin viewing, click Logon and then Default logon option.

USING CCTV ANYWHERE

Login

You can either use the *Default* login details, i.e. Your stored Username and Password, or enter a temporary *New* Username and Password.

Zooming

To *zoom in* on an area of the image, tap the point of the image on which you wish to focus the zoom. To *zoom out* again, tap outside the image.

Camera Switching

From the camera menu, select the camera input that you wish to switch to (only for multicamera camera modules).

DEFAULT PARAMETERS

LOGIN

Username: Login username

Password: Login password

LOGIN SECURITY

Username+Password: Username and password entry required to view camera.

Username: Username entry required to view camera (uses default password).

Password: Password entry required to view camera (uses default username).

None: No username or password entry required to view camera (uses default username and password).

ZOOM FACTOR

2: X2 zoom.

4: X4 zoom.

PAN SIZE

1: Pan by 1 image width.

1/2: Pan by 1/2 image width.

1/4: Pan by 1/4 image width.